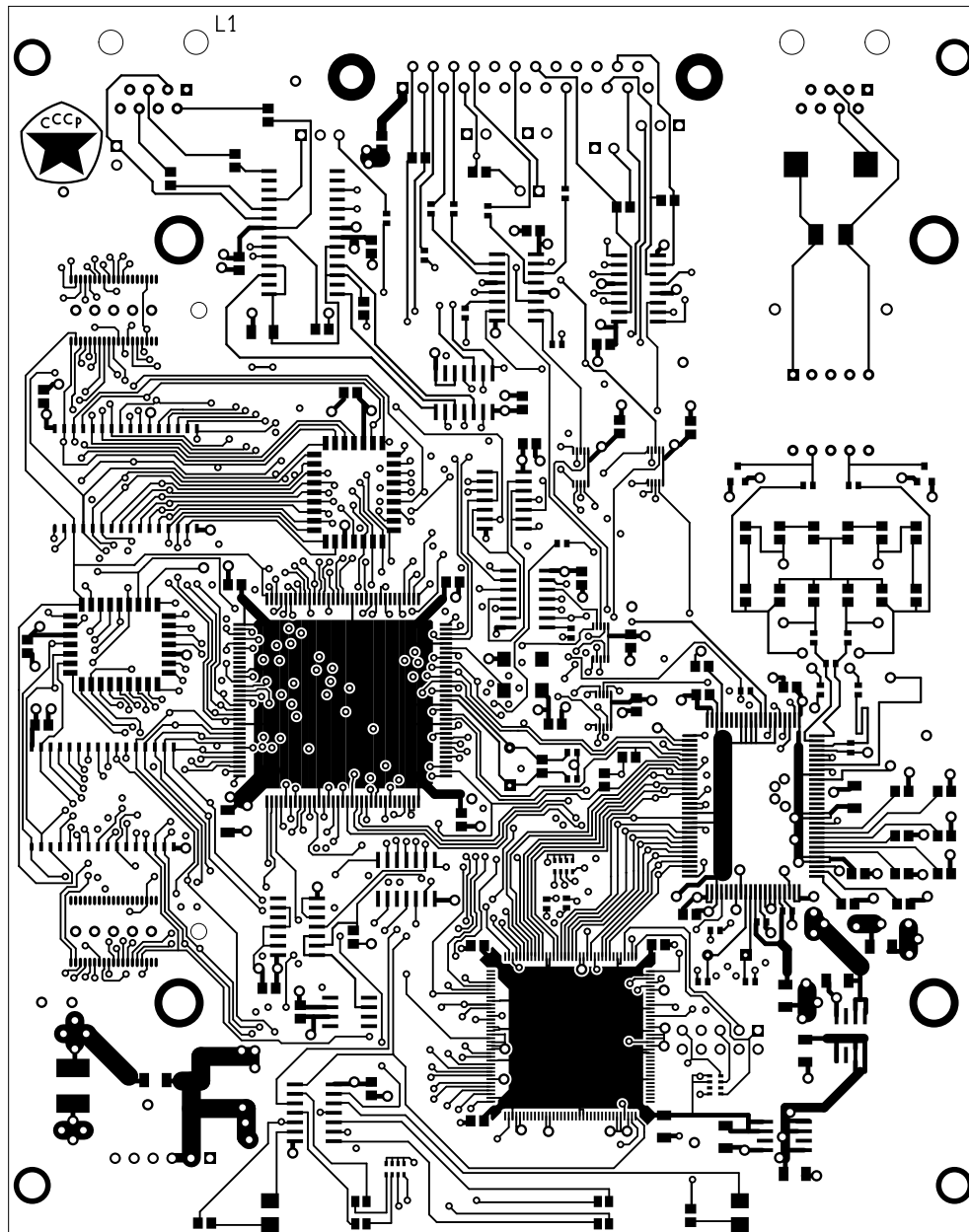
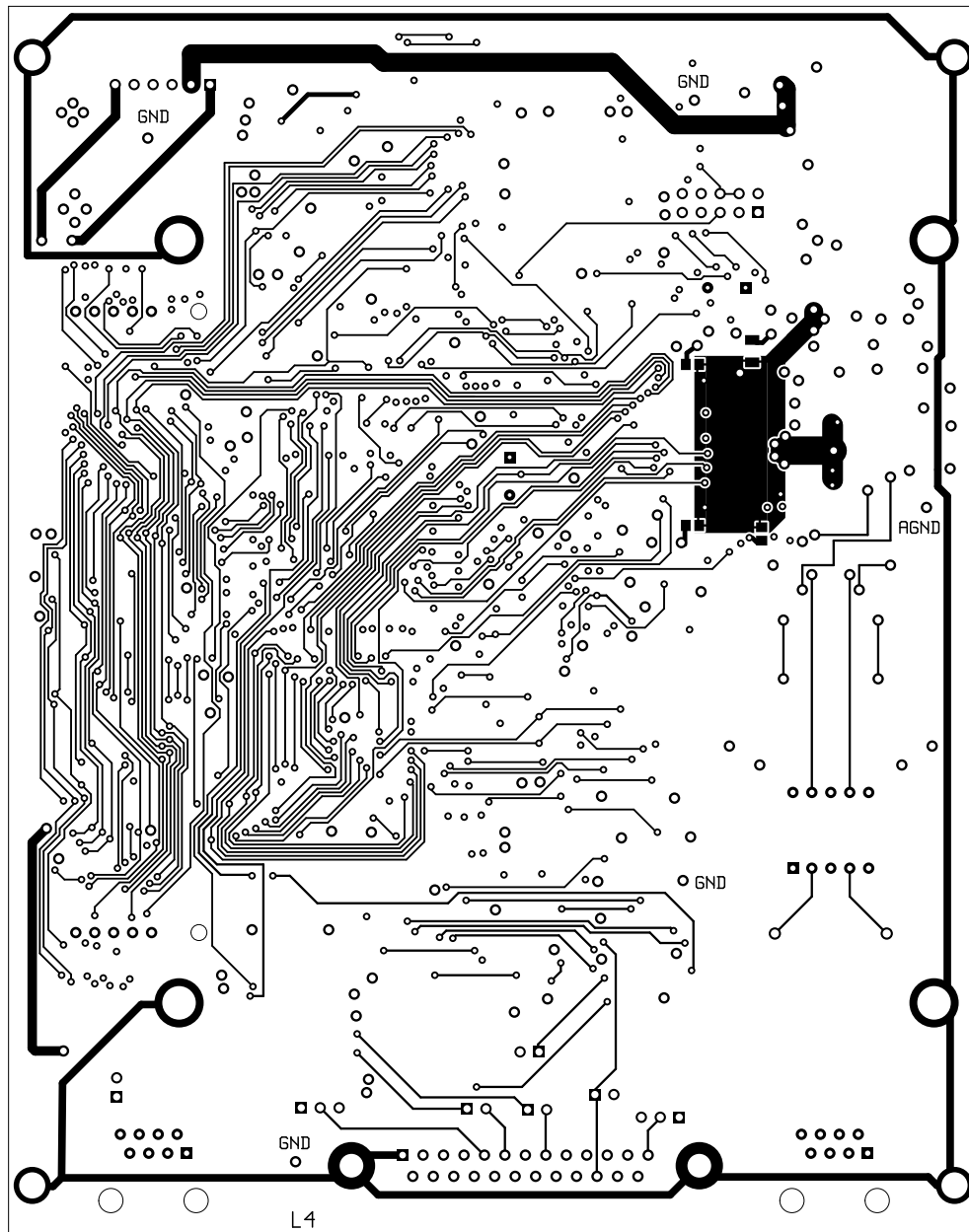
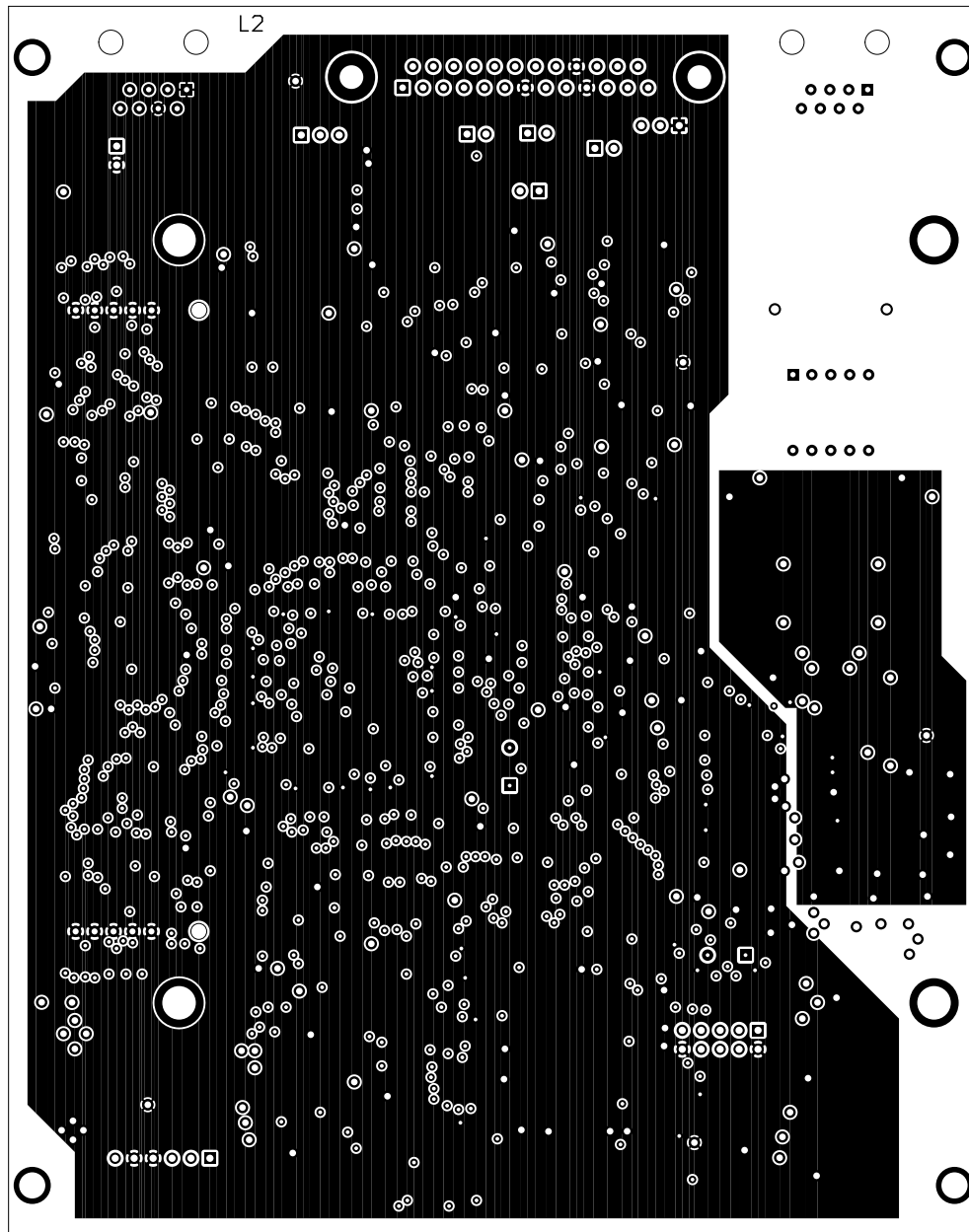
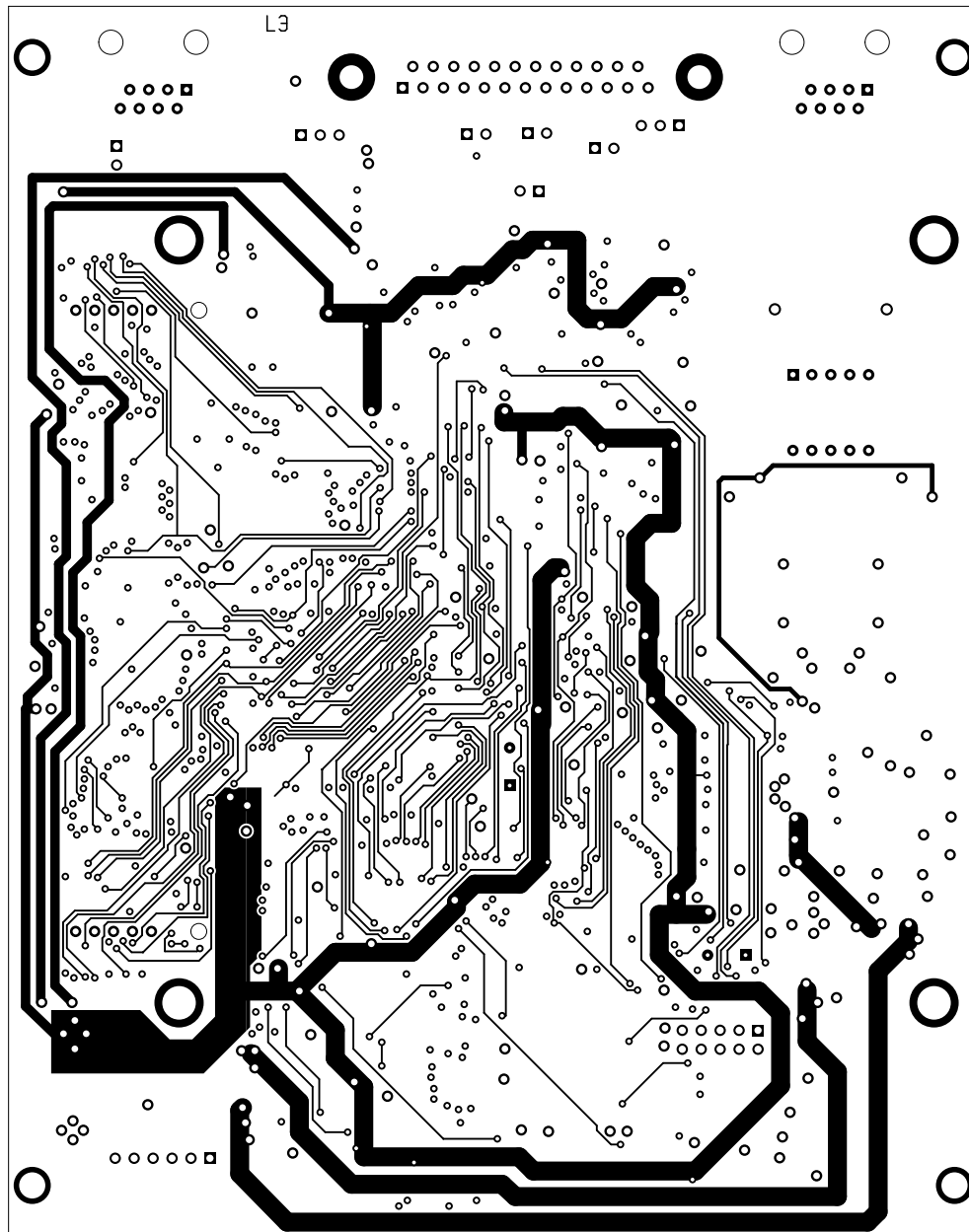


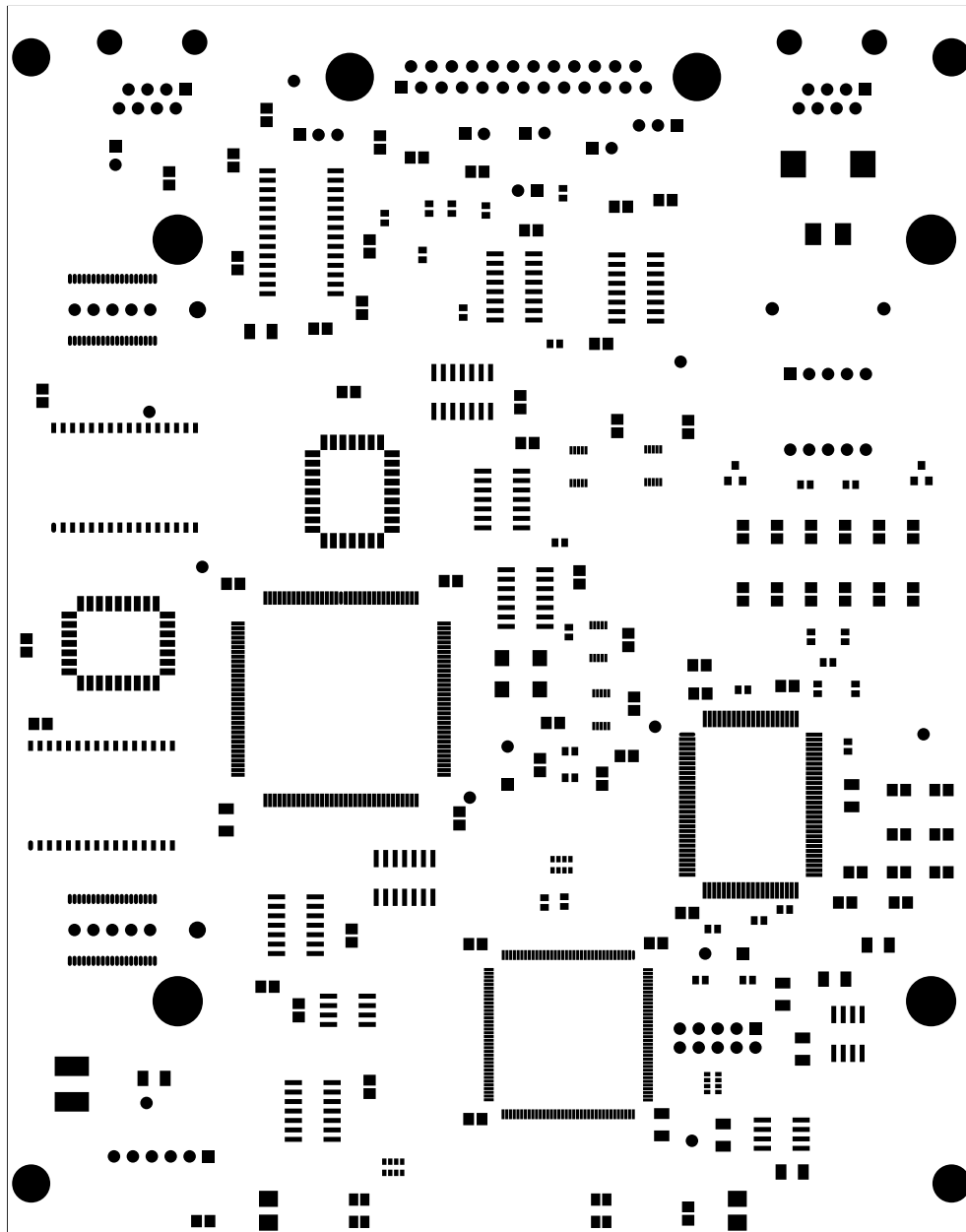
2. component
3. solder
4. GNDplane
5. middle1
6. componentmask
7. soldermask
8. plated-drill
9. unplated-drill
10. topsilk
11. bottomsilk
12. bottompaste
13. toppaste
14. topassembly
15. bottomassembly
16. fab

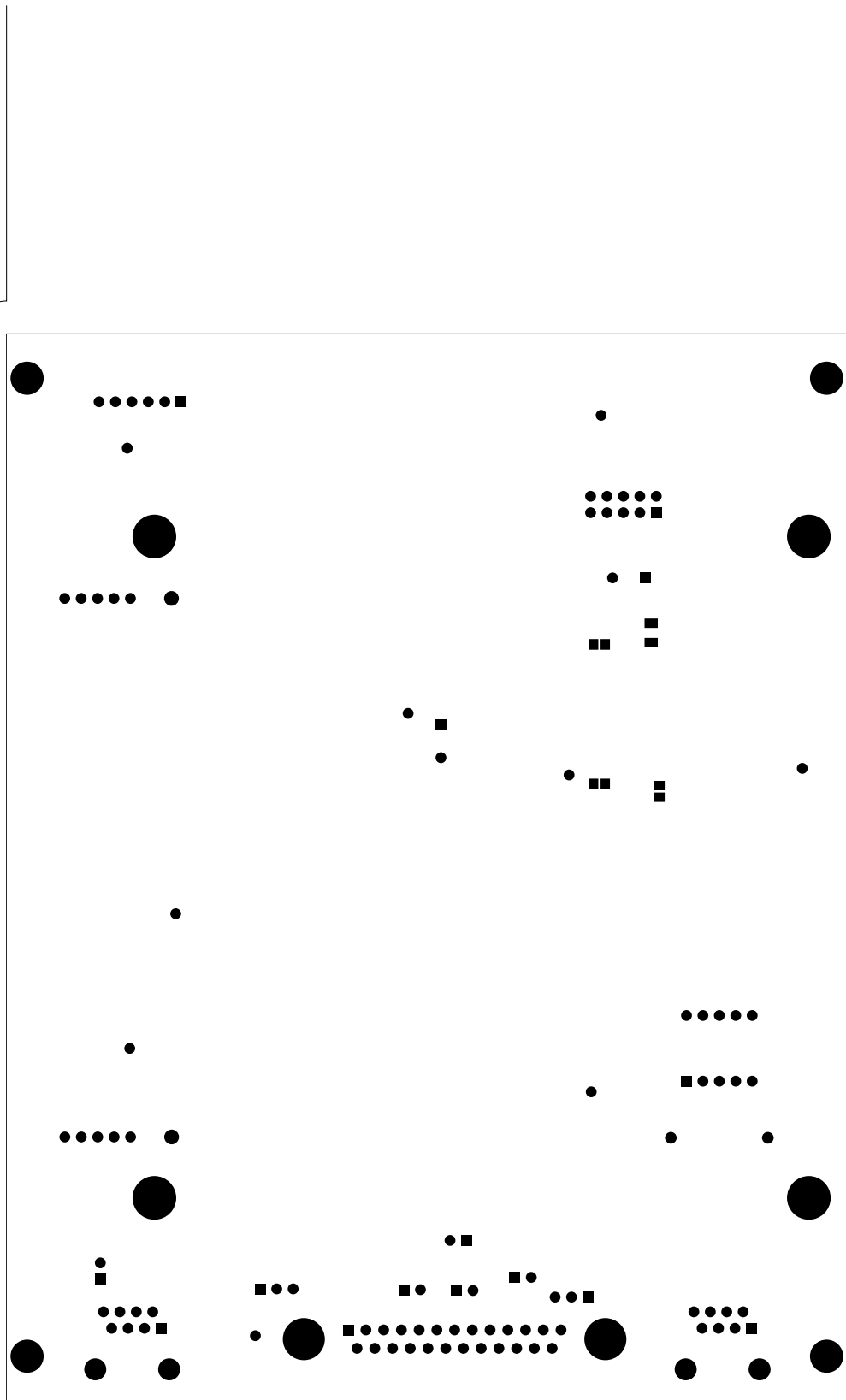


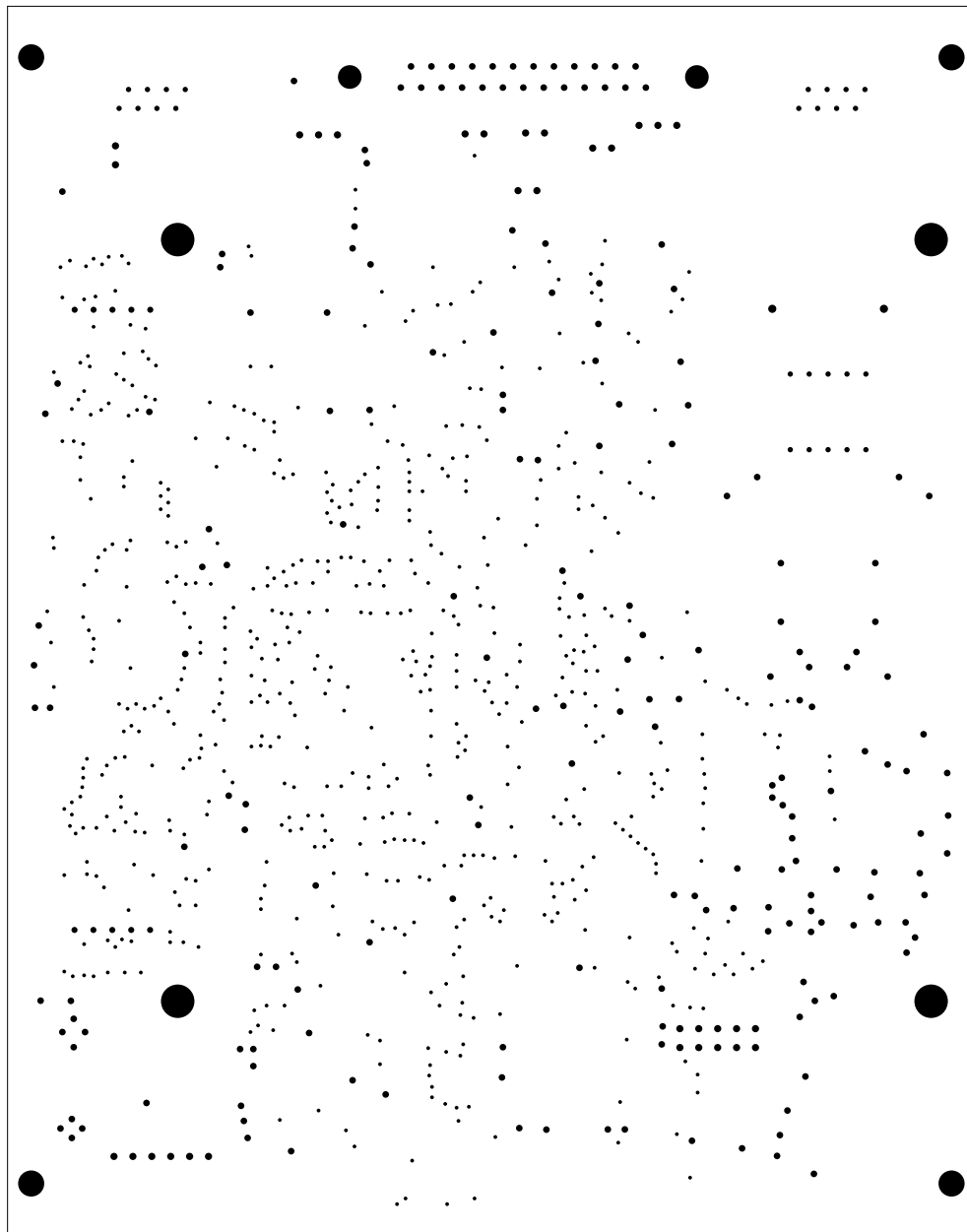




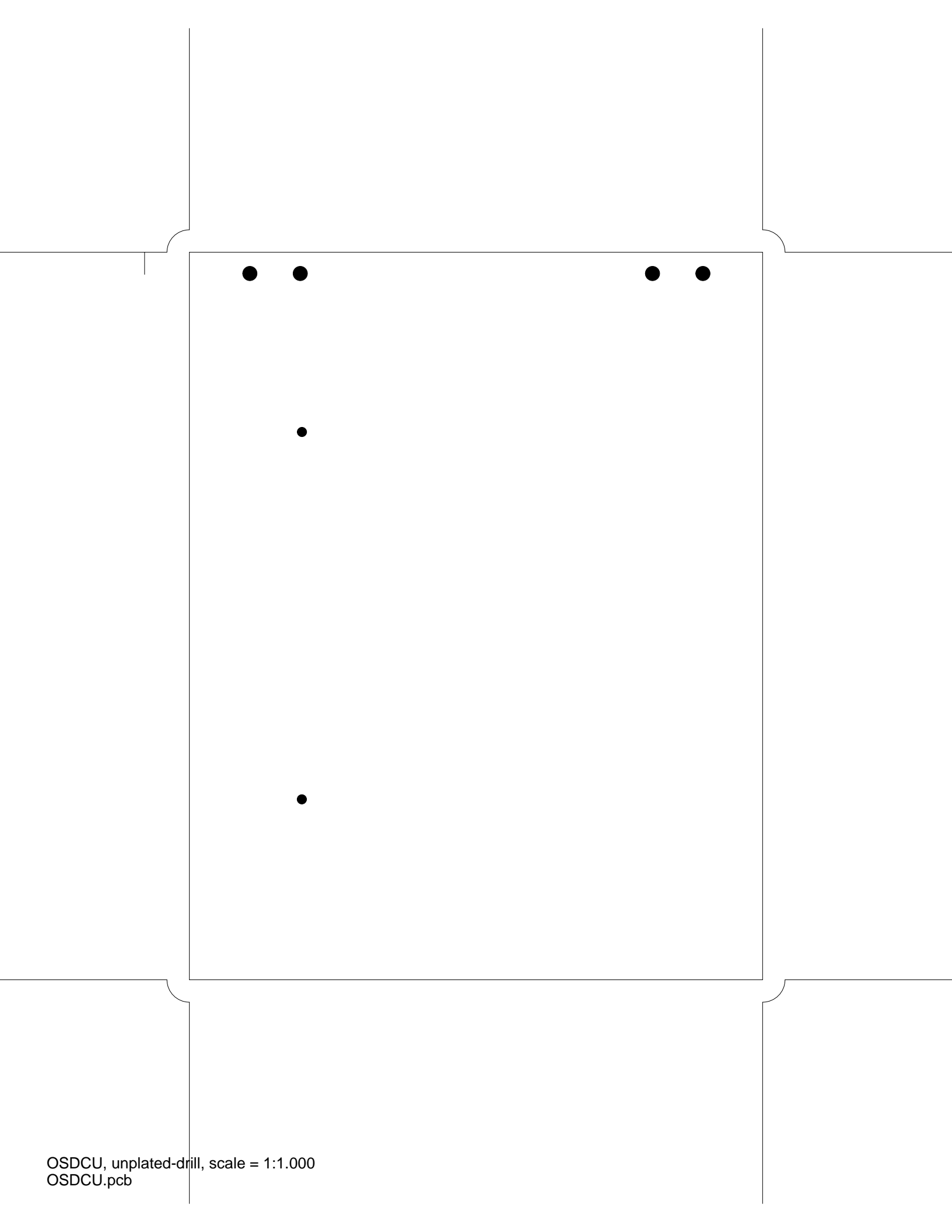


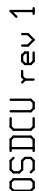












○ SDSL debug instrument  
& prototype DSU  
Open Source HW design  
by Falcon & Ineiev

C16

C15

FPGA\_CS\_L ○

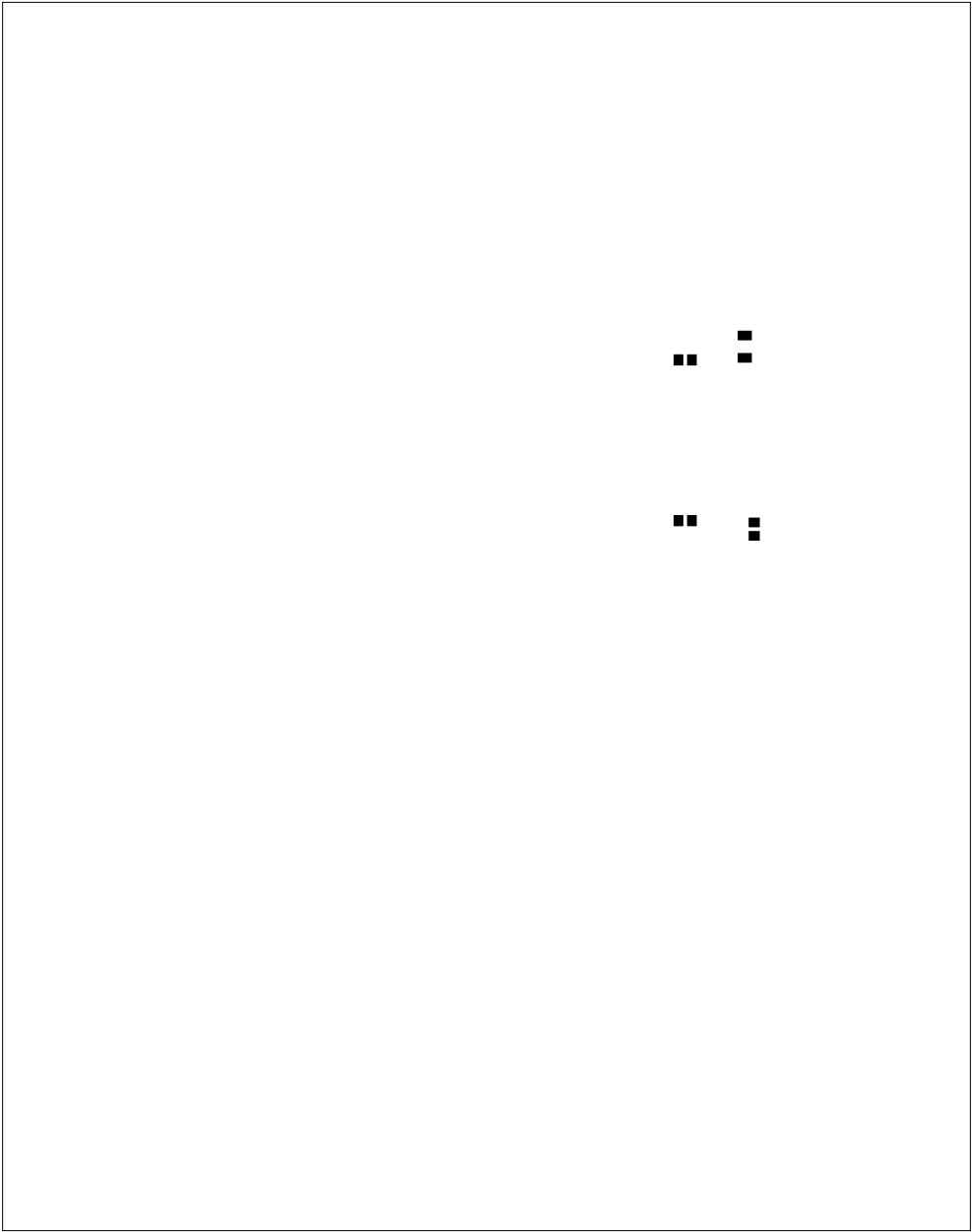
BP\_CS\_L ○

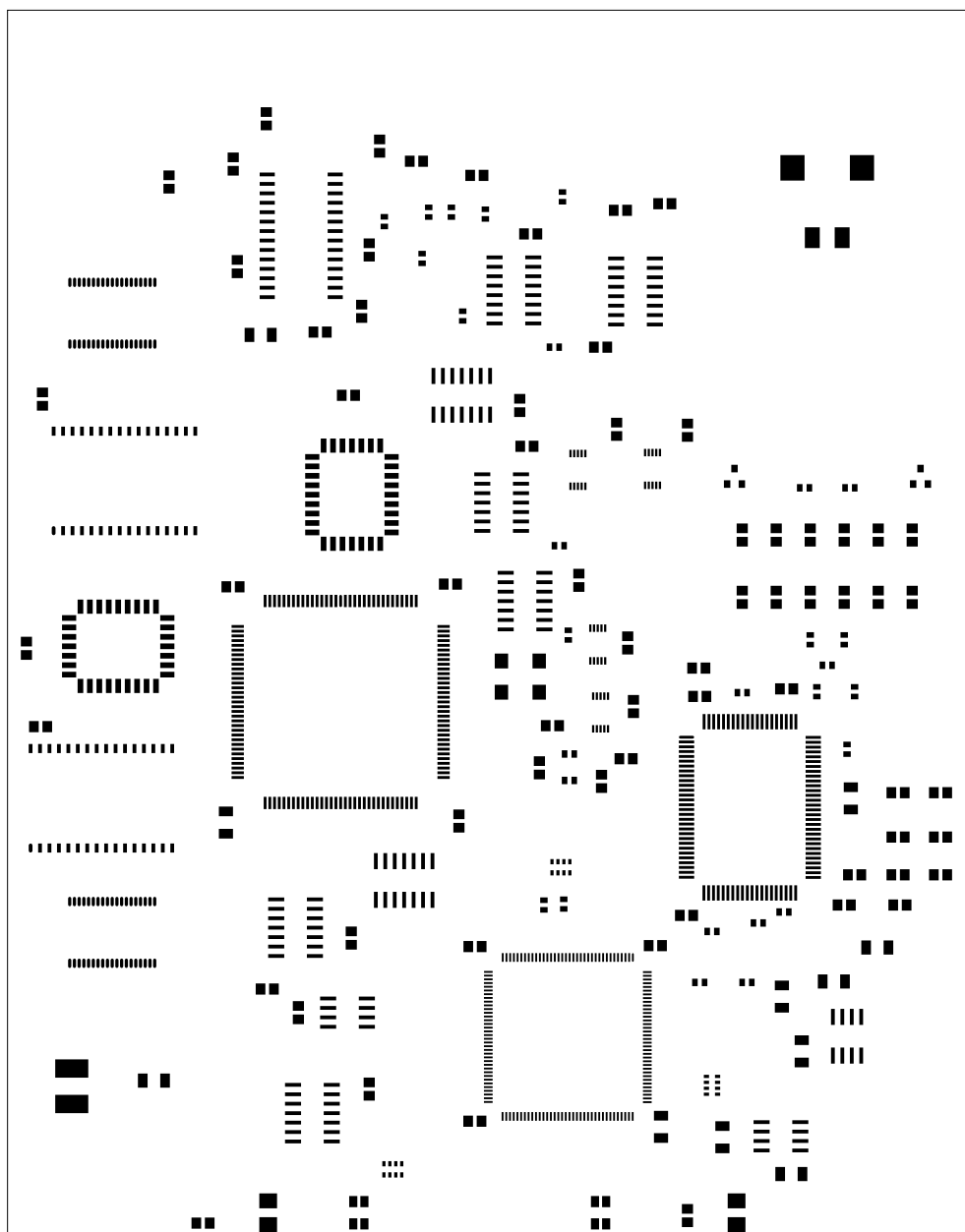
C17

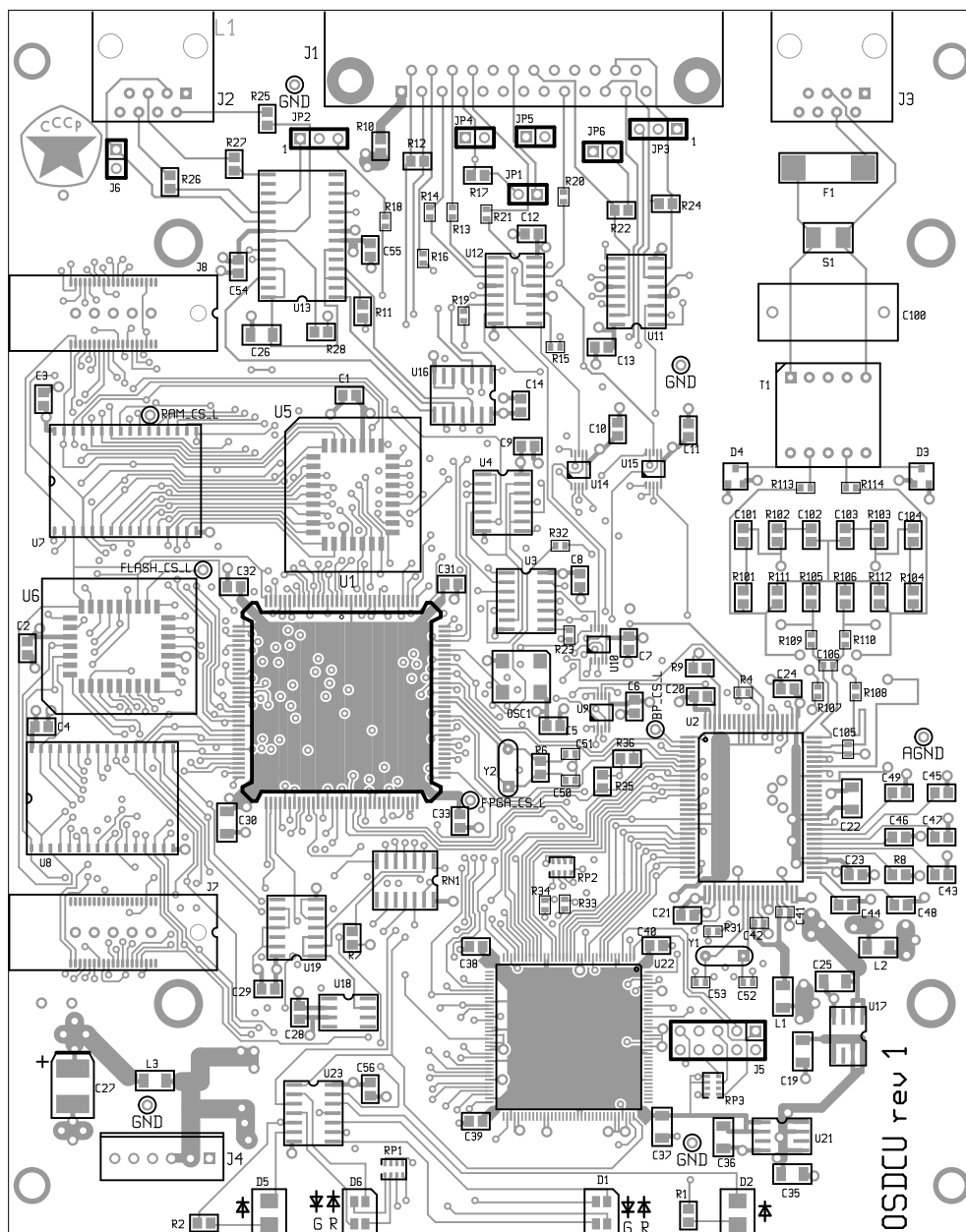
C18

FLASH\_CS\_L ○

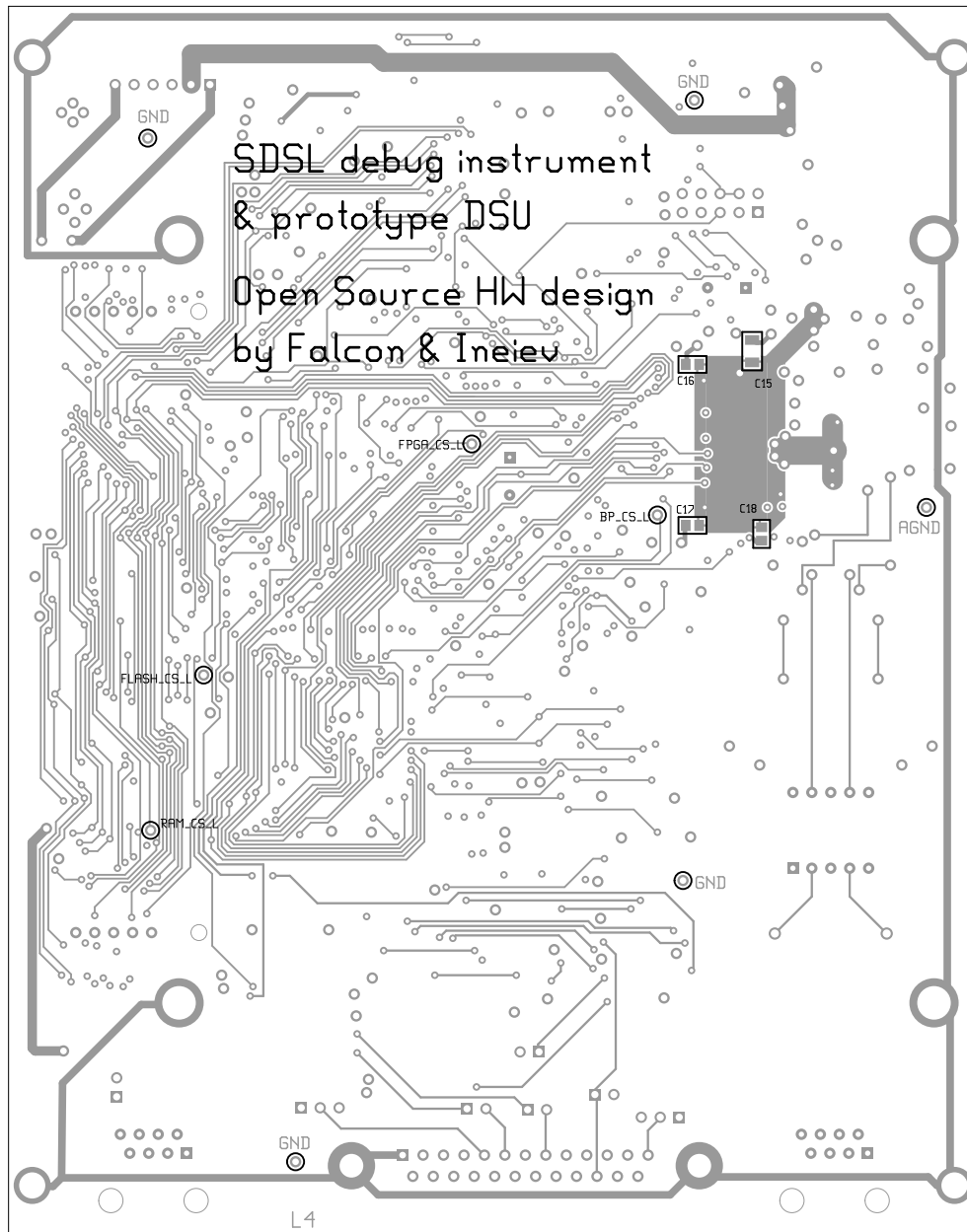
○ RAM\_CS\_L







OSDCU, frontassembly, scale = 1:1.000  
OSDCU.pcb



There are 11 different drill sizes used in this layout, 988 holes total

Symbol	Diam. (Inch)	Count	Plated?
Y	<u>0.020</u>	<u>629</u>	<u>YES</u>
+	<u>0.028</u>	<u>26</u>	<u>YES</u>
x	<u>0.032</u>	<u>10</u>	<u>YES</u>
•	<u>0.035</u>	<u>193</u>	<u>YES</u>
□	<u>0.038</u>	<u>32</u>	<u>YES</u>
▽	<u>0.043</u>	<u>2</u>	<u>YES</u>
⊕	<u>0.084</u>	<u>2</u>	<u>NO</u>
⊗	<u>0.125</u>	<u>2</u>	<u>YES</u>
⊙	<u>0.128</u>	<u>4</u>	<u>NO</u>
⊠	<u>0.138</u>	<u>4</u>	<u>YES</u>
⊡	<u>0.177</u>	<u>4</u>	<u>YES</u>

Title: OSDCU - Fabrication Drawing

Author: Harhan Engineering Co.

Date: Tue Jan 15 06:31:12 2013 UTC

Maximum Dimensions: 5118 mils wide, 6496 mils high



Board outline is the centerline of this 10 mil rectangle - 0,0 to 5118,6496 mils